



Deckorators® Decking Installation Guides

Pro Plug Installation

Important notices

The diagrams and instructions in this brochure are for illustration purposes only and are not meant to replace a licensed professional. Any construction or use of the product must be in accordance with all local zoning and/or building codes. The consumer assumes all risks and liability associated with the construction or use of this product.

The consumer or contractor should take all necessary steps to ensure the safety of everyone involved in the project, including, but not limited to, wearing the appropriate safety equipment. Except as contained in the written limited warranty, the warrantor does not provide any other warranty, either express or implied, and shall not be liable for any damages, including consequential damages.

DecXorators® is not suitable for structural use. It must not be used for primary load-bearing members such as posts, joists, beams, or stringers. The same common-sense precautions should be taken when handling DecXorators® as with wood or other building materials. Dust masks and eye protection devices are recommended to avoid possible irritation from sawdust and chips. Gloves will help protect hands. Hands should be washed after construction work.

Contact our team on 01278 455326 or email sales@stormbuildingproducts.com to receive more information or advice.

Pro Plug® System Deck and Trim Installation Instructions

Pro Plug® System Deck/Trim is a hidden fastening solution for PVC/composite decking and trim. The system provides a secure face-fastened connection with precision-cut plugs made from actual decking and trim materials.

For best results, follow all decking and trim manufacturer instructions, including pre-drilling at board ends if necessary and specifications for screw spacing, edge/end distances and gapping.

To reduce the risk of injury, follow the instructions of your power tool manufacturer and use safety glasses.

Installation

Step 1 Insert the appropriated driver bit into the Pro Plug® PVC/Composite Tool. The “Deck” bit is for the PVC or composite decking; the “Trim” bit is for the PVC trim. Do not use the impact driver with the Tool.

Step 2 Drive the screw with the PVC/Composite Tool using a standard drill on high speed in a straight and stable fashion perpendicular to the work surface. The Tool’s Auto-Stop™ mechanism will make a “pop” sound when the screw is set to the correct depth. [Do not hesitate or slow down while driving].

Step 3 Insert the plug into the hole above the fastener and tap into place with a smooth-face steel hammer until it is flush with the deck or trim surface. Keep the hammerhead flat with the board to prevent surface marring.

Replacing Driver Bits: Disconnect power and retract the Tool fully; remove the bit with pliers. To insert a new bit, retract the Tool fully and insert the bit all the way into the Tool. Tip: rotate the bit slightly while inserting.

To remove plugs: drive a screw into the plug and pull it out.

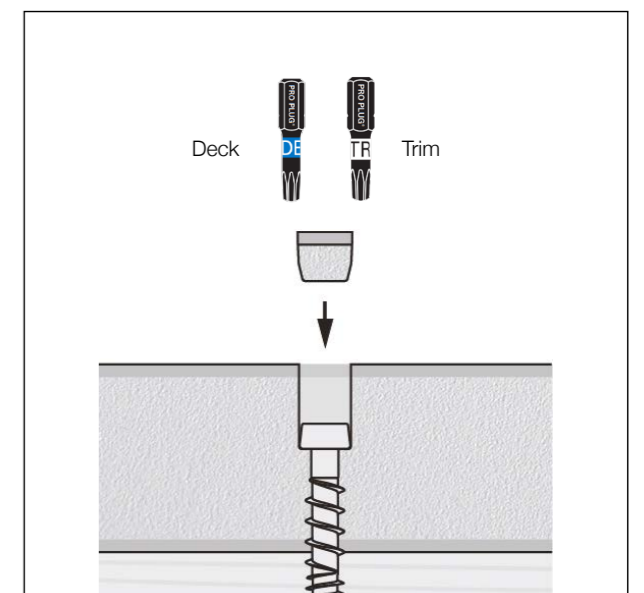
Tools and Items Needed

System components

- Plugs made from PVC/Composite decking and trim material.
- Epoxy-coated screws, grade 305 or marine grade 316 stainless screws.
- PVC/Composite Tool for setting screws to the correct depth

Notice to installers

- Do not use an impact driver
- For fascia boards, use Pro Plug® system fascia.
- Deck/trim boards may vary in colour. Test the Pro Plug® system on a scrap piece to ensure you approve of the final look and colour.
- Boards should be kept dry and holes free of debris before inserting plugs. Insert plugs shortly after setting screws. Do not leave overnight or let moisture get into the holes.





Stunning style backed up by a comprehensive warranty. Guaranteed.

Call STORM today on 01278 455326 for more information